

# String sextet nr.1

in B $\flat$  major

Johannes Brahms

Op.18

## I

Allegro ma non troppo



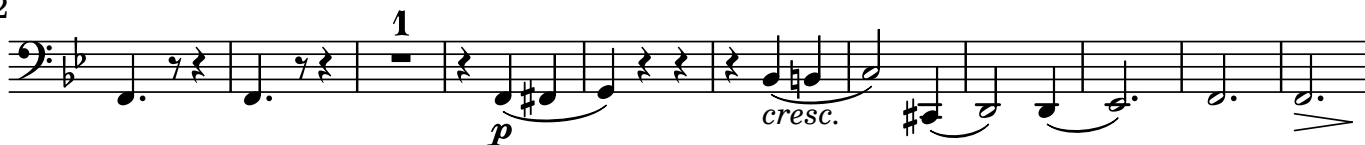
10



21



32



43

**A**

tranquillo



55



62



## 2. Violoncell

72



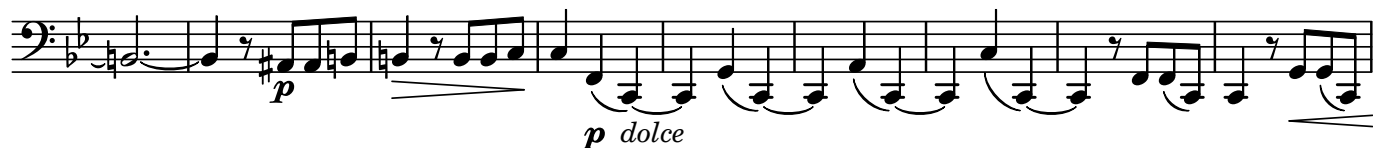
84



94



104



113



121



130



139



149



159



169



177



185



195



205



215



223



232



240



250



261



272



286



## 2. Violoncell

298 *arco*

310 **K** *p* *cresc.*

321 **L** *cresc.* *fp* *p*

332 *p dolce*

341 *pp* *poco a poco cresc.*

349 *mf cresc.*

358 **M** *> p dim.* *pp* *mf* *cresc.* 7

375 *f* *dim. e rit.*

387 *poco più moderato* *pizz.* *arco* *pp* *f*

## II

## Andante ma moderato

2. Violoncell *f*

11 *f*

24 **A** *f*

Brahms - String sextet nr.1 in B $\flat$  major  
010-BraSx12.Vcl0

121 *pizz.* 1 *mf* 1 *mf* *p* *pp*

128 **F** *arco* *p*

138 **G** *p*

149 *dim.*

## III

## Scherzo

## Allegro molto

*pizz.*

1.Violoncell *mf* *cresc.*

9 *f* *arco* *f* *cresc.*

21 *pizz.* *fp*

31 *cresc.* *più cresc.*

40 *f* *arco* *ff* **Trio** **Animato**

48 *ff*

56 *ff* *sempre*

64



74



Coda

Più animato

Scherzo da capo senza  
replica e poi coda

83



91



99



## IV

Rondo

Poco Allegretto e grazioso

pizz.

2. Violoncell



12



41

A



55



66



80



**C**

The bass line of 'The Rose Tree' is written in G major (one sharp) and 2/4 time. It consists of 16 measures. The notation includes various dynamics such as *f* (forte) and *p* (piano), and articulation marks like slurs and accents. The melody is characterized by a mix of eighth and sixteenth notes, with some measures featuring triplets or beamed sixteenth notes.

*f*

The bass line of 'The Rose Tree' is written on a single staff in bass clef with a key signature of one flat (B-flat). The melody consists of a series of eighth and sixteenth notes, mostly moving in a stepwise fashion. It begins with a half note G2, followed by eighth notes A2, Bb2, and C3, then a half note D3, and continues with a series of eighth notes: E3, F3, G3, A3, Bb3, C4, D4, E4, F4, G4, A4, Bb4, C5, D5, E5, F5, G5, A5, Bb5, C6, D6, E6, F6, G6, A6, Bb6, C7, D7, E7, F7, G7, A7, Bb7, C8, D8, E8, F8, G8, A8, Bb8, C9, D9, E9, F9, G9, A9, Bb9, C10, D10, E10, F10, G10, A10, Bb10, C11, D11, E11, F11, G11, A11, Bb11, C12, D12, E12, F12, G12, A12, Bb12, C13, D13, E13, F13, G13, A13, Bb13, C14, D14, E14, F14, G14, A14, Bb14, C15, D15, E15, F15, G15, A15, Bb15, C16, D16, E16, F16, G16, A16, Bb16, C17, D17, E17, F17, G17, A17, Bb17, C18, D18, E18, F18, G18, A18, Bb18, C19, D19, E19, F19, G19, A19, Bb19, C20, D20, E20, F20, G20, A20, Bb20, C21, D21, E21, F21, G21, A21, Bb21, C22, D22, E22, F22, G22, A22, Bb22, C23, D23, E23, F23, G23, A23, Bb23, C24, D24, E24, F24, G24, A24, Bb24, C25, D25, E25, F25, G25, A25, Bb25, C26, D26, E26, F26, G26, A26, Bb26, C27, D27, E27, F27, G27, A27, Bb27, C28, D28, E28, F28, G28, A28, Bb28, C29, D29, E29, F29, G29, A29, Bb29, C30, D30, E30, F30, G30, A30, Bb30, C31, D31, E31, F31, G31, A31, Bb31, C32, D32, E32, F32, G32, A32, Bb32, C33, D33, E33, F33, G33, A33, Bb33, C34, D34, E34, F34, G34, A34, Bb34, C35, D35, E35, F35, G35, A35, Bb35, C36, D36, E36, F36, G36, A36, Bb36, C37, D37, E37, F37, G37, A37, Bb37, C38, D38, E38, F38, G38, A38, Bb38, C39, D39, E39, F39, G39, A39, Bb39, C40, D40, E40, F40, G40, A40, Bb40, C41, D41, E41, F41, G41, A41, Bb41, C42, D42, E42, F42, G42, A42, Bb42, C43, D43, E43, F43, G43, A43, Bb43, C44, D44, E44, F44, G44, A44, Bb44, C45, D45, E45, F45, G45, A45, Bb45, C46, D46, E46, F46, G46, A46, Bb46, C47, D47, E47, F47, G47, A47, Bb47, C48, D48, E48, F48, G48, A48, Bb48, C49, D49, E49, F49, G49, A49, Bb49, C50, D50, E50, F50, G50, A50, Bb50, C51, D51, E51, F51, G51, A51, Bb51, C52, D52, E52, F52, G52, A52, Bb52, C53, D53, E53, F53, G53, A53, Bb53, C54, D54, E54, F54, G54, A54, Bb54, C55, D55, E55, F55, G55, A55, Bb55, C56, D56, E56, F56, G56, A56, Bb56, C57, D57, E57, F57, G57, A57, Bb57, C58, D58, E58, F58, G58, A58, Bb58, C59, D59, E59, F59, G59, A59, Bb59, C60, D60, E60, F60, G60, A60, Bb60, C61, D61, E61, F61, G61, A61, Bb61, C62, D62, E62, F62, G62, A62, Bb62, C63, D63, E63, F63, G63, A63, Bb63, C64, D64, E64, F64, G64, A64, Bb64, C65, D65, E65, F65, G65, A65, Bb65, C66, D66, E66, F66, G66, A66, Bb66, C67, D67, E67, F67, G67, A67, Bb67, C68, D68, E68, F68, G68, A68, Bb68, C69, D69, E69, F69, G69, A69, Bb69, C70, D70, E70, F70, G70, A70, Bb70, C71, D71, E71, F71, G71, A71, Bb71, C72, D72, E72, F72, G72, A72, Bb72, C73, D73, E73, F73, G73, A73, Bb73, C74, D74, E74, F74, G74, A74, Bb74, C75, D75, E75, F75, G75, A75, Bb75, C76, D76, E76, F76, G76, A76, Bb76, C77, D77, E77, F77, G77, A77, Bb77, C78, D78, E78, F78, G78, A78, Bb78, C79, D79, E79, F79, G79, A79, Bb79, C80, D80, E80, F80, G80, A80, Bb80, C81, D81, E81, F81, G81, A81, Bb81, C82, D82, E82, F82, G82, A82, Bb82, C83, D83, E83, F83, G83, A83, Bb83, C84, D84, E84, F84, G84, A84, Bb84, C85, D85, E85, F85, G85, A85, Bb85, C86, D86, E86, F86, G86, A86, Bb86, C87, D87, E87, F87, G87, A87, Bb87, C88, D88, E88, F88, G88, A88, Bb88, C89, D89, E89, F89, G89, A89, Bb89, C90, D90, E90, F90, G90, A90, Bb90, C91, D91, E91, F91, G91, A91, Bb91, C92, D92, E92, F92, G92, A92, Bb92, C93, D93, E93, F93, G93, A93, Bb93, C94, D94, E94, F94, G94, A94, Bb94, C95, D95, E95, F95, G95, A95, Bb95, C96, D96, E96, F96, G96, A96, Bb96, C97, D97, E97, F97, G97, A97, Bb97, C98, D98, E98, F98, G98, A98, Bb98, C99, D99, E99, F99, G99, A99, Bb99, C100, D100, E100, F100, G100, A100, Bb100, C101, D101, E101, F101, G101, A101, Bb101, C102, D102, E102, F102, G102, A102, Bb102, C103, D103, E103, F103, G103, A103, Bb103, C104, D104, E104, F104, G104, A104, Bb104, C105, D105, E105, F105, G105, A105, Bb105, C106, D106, E106, F106, G106, A106, Bb106, C107, D107, E107, F107, G107, A107, Bb107, C108, D108, E108, F108, G108, A108, Bb108, C109, D109, E109, F109, G109, A109, Bb109, C110, D110, E110, F110, G110, A110, Bb110, C111, D111, E111, F111, G111, A111, Bb111, C112, D112, E112, F112, G112, A112, Bb112, C113, D113, E113, F113, G113, A113, Bb113, C114, D114, E114, F114, G114, A114, Bb114, C115, D115, E115, F115, G115, A115, Bb115, C116, D116, E116, F116, G116, A116, Bb116, C117, D117, E117, F117, G117, A117, Bb117, C118, D118, E118, F118, G118, A118, Bb118, C119, D119, E119, F119, G119, A119, Bb119, C120, D120, E120, F120, G120, A120, Bb120, C121, D121, E121, F121, G121, A121, Bb121, C122, D122, E122, F122, G122, A122, Bb122, C123, D123, E123, F123, G123, A123, Bb123, C124, D124, E124, F124, G124, A124, Bb124, C125, D125, E125, F125, G125, A125, Bb125, C126, D126, E126, F126, G126, A126, Bb126, C127, D127, E127, F127, G127, A127, Bb127, C128, D128, E128, F128, G128, A128, Bb128, C129, D129, E129, F129, G129, A129, Bb129, C130, D130, E130, F130, G130, A130, Bb130, C131, D131, E131, F131, G131, A131, Bb131, C132, D132, E132, F132, G132, A132, Bb132, C133, D133, E133, F133, G133, A133, Bb133, C13

4

7

*p f* *p f* *p* *p dolce* *p*

4

**D**

$p$  dolce

5

*p dolce*

*poco* .

9

*poco f* *cresc*

**E**

1

Musical notation for Example 6-10, showing a bass staff with various notes, rests, and articulation marks.

*j*

[illegible] $\dot{f}f$ 

2

Bass line musical notation for 'The Rose Tree'. The key signature is one flat (B-flat). The notation includes various note values (quarter, eighth, and sixteenth notes), rests, and dynamic markings such as *ff* (fortissimo) and *ff* (fortissimo). The piece concludes with a double bar line.

 $\mathcal{F}\mathcal{F}$ 

4

*cresc.* *ff* *ff*

The bass line is written on a single staff in bass clef with a key signature of one flat (B-flat). It begins with a quarter note G2, followed by eighth notes A2 and B2, then eighth notes C3 and D3, and continues with a series of eighth and quarter notes. The dynamics *cresc.* and *ff* are indicated. The line ends with a final quarter note G2.

**F**

[illegible]



## 2. Violoncell

248 **1** **1** **1** **1** **1** *arco* **1** **G** *pp* *ff*

262 *ff* *p* *dim.*

276 **H** **3** **4** *p* *p*

295 *p*

309 *cresc.* *p* *p*

323 **J** *p* *f*

337 *p* *f* *f* *p* **K**

348 *f*

361 *p* *f* *p* *f* *p* *dolce* **4**

375 **2** *p* *p* *p* *dim.*

387 **L** *pp* *dolce* **1** **1** **1** **1** **1**

## 2. Violoncell

400 *1 pizz. p cresc.*

413 **M** *f poco f*

425 *f arco f più f*

438 **N** *pizz. dim. p p*

452 *arco p*

466 **Animato, poco a poco più** *pizz. p poco marc.*

478 *1 arco p*

488 *cresc. f*

498 *ff ff*

Typeset and placed in the public domain by J.F. Lucarelli

<http://www.espace-midi.com/lilypond/en>

Unrestricted modification and redistribution is permitted and encouraged

Copy this music and share it!

Send comments or remarks to [info@espace-midi.com](mailto:info@espace-midi.com)Engraved with LilyPond 2.18.2 ( <http://www.lilypond.org> )

010-BraSx12.Vcl0 28-01-2019